



PRESSURE TREATED TIMBER



Tanalised® E pressure treated timber is timber which has been impregnated with Tanalith® E wood preservative under rigidly controlled conditions in a vacuum pressure timber impregnation plant.

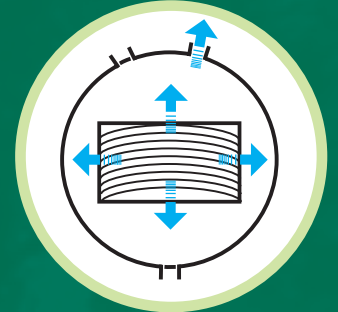


... the **proven and effective choice** for fencing, decking, leisure wood, playground equipment and building applications.

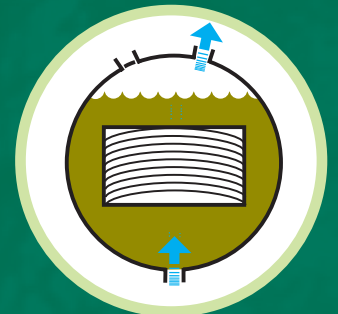
Suitable for Use/Hazard Classes 1-4

Treatment Process

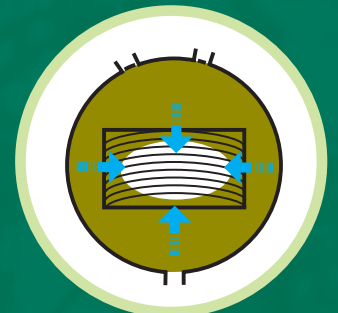
1 Timber loaded into treatment vessel. Initial vacuum applied and the timber cells are evacuated of air. Vacuum held.



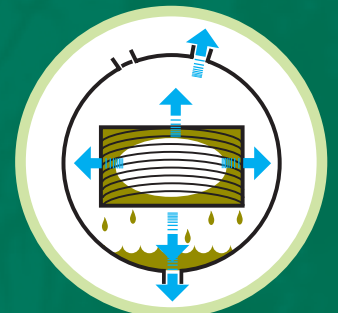
2 Cylinder flooded under vacuum with TANALITH® E wood preservative.



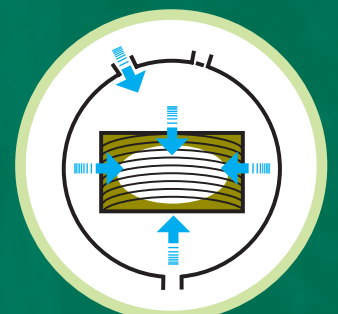
3 Hydraulic pressure applied, forcing the preservative deep into the structure of the timber.



4 Final vacuum extracts excess preservative solution, which is pumped back to storage.



5 Low pressure inside timber draws in surface solution when vented to atmosphere. Treated timber is left to dry.



Please note: Preservative penetration will depend upon timber species, end use classification and in some cases heartwood/sapwood ratios.



PRESSURE TREATED TIMBER CONSUMER INFORMATION



MAIN FEATURES

- **TANALISED® E** pressure treated timber is timber which has been impregnated with **TANALITH® E*** wood preservative under controlled conditions in a vacuum pressure impregnation plant.
- **TANALISED® E** pressure treated timber is protected against fungal (rot) and insect attack to ensure a long service life.
- Following impregnation the preservative bonds with the wood structure such that it cannot easily be removed from the timber.
- Typical uses for **TANALISED® E** pressure treated timber include general construction, cladding, garden and leisure wood structures, fencing and playground equipment.
- **TANALISED® E** pressure treated timber is available with built-in water repellency - **TANALISED® Extra™** and with built-in brown colour - **TANATONE®**.

* TANALITH® E wood preservative is cleared for use under the UK Control of Pesticides Regulations. The preservative contains copper and triazole biocides.





PRESSURE TREATED TIMBER CONSUMER INFORMATION

HANDLING PRECAUTIONS

You should have received the timber in a dry condition with no sign of preservative fluid on the surface. If this is not the case timber should be stored open stacked under ventilated conditions and protected from rain and snow to dry before use.

When working with timber, wear gloves to protect the skin against abrasions and splinters.

Any cuts and abrasions should be protected by a waterproof dressing.

When power-sawing and machining, wear goggles to protect the eyes from flying particles. Wear a dust mask and, whenever possible, perform these operations outdoors to avoid accumulations of airborne sawdust.

Avoid frequent or prolonged inhalation of sawdust. Consult HSE Guide EH40, 2002 for further information on exposure controls to wood dust.

In order to prevent injury, care should be taken when lifting or moving timber.

The same precautions apply to untreated timber.

PERSONAL HYGIENE

After handling or working with treated timber all exposed skin should be washed before commencing other activities, especially eating, drinking, smoking or going to the toilet.

If sawdust accumulates on clothes, clean them before reuse.

ARCH TIMBER PROTECTION

Wheldon Road, Castleford, West Yorkshire, WF10 2JT.
Tel (01977) 714000 Fax (01977) 714001
e-mail advice@archchemicals.com www.archtp.com

Disclaimer: Whilst every attempt has been made to ensure the accuracy and reliability of the information contained in this document, Arch Timber Protection gives no undertaking to that effect and no responsibility can be accepted for reliance on this information.

Arch Timber Protection updates its literature as and when necessary. Please ensure you have an up to date copy.

© Tanalised, Tanalith and Ensele are registered trademarks of Arch Timber Protection. © Arch Timber Protection, 2005.

Laundry heavily soiled clothes separately from other household wash items.

END USE CONSIDERATIONS

TANALISED® E pressure treated timber can be used in internal and external building application and outdoors, in ground contact or above the ground, without any need for further protection.

It should not be used where it may come into contact with drinking water or for food preparation surfaces/structures or containers for storage, or in circumstances where the preservative may become a component of food or animal feed.

When considering using TANALISED® E pressure treated timber around fishponds, please contact Arch Timber Protection for advice.

It is best practice to prepare the timber as fully as possible prior to treatment to ensure best results.

If any cutting, notching or drilling is made to the timber following treatment then any exposed surfaces should be liberally swabbed with ENSELE® end grain preservative to maintain the integrity of the treatment.

ON-SITE PRECAUTIONS

All sawdust and construction debris should be cleaned up and disposed of after construction.

WASTE DISPOSAL

TANALISED® E pressure treated timber is not classified as special or hazardous waste.

Post treatment processing wastes, such as sawdust and off-cuts, must not be used for animal litter or bedding. TANALISED® E pressure treated wood should not be used for fuel in barbecues, cooking stoves or grates. Small quantities (less than 0.5 tonnes) can be burnt in the open with due care and attention to your neighbours.

Householders should preferably dispose of the timber, sawdust or ash through the ordinary waste collection service or at a local authority amenity/disposal site.

Any waste timber, sawdust or redundant timber from commercial or industrial use (e.g. construction sites) should preferably be recycled by re-use, or disposed of to an authorised landfill or to a correctly controlled and approved waste incinerator.

FURTHER INFORMATION

Should you require further information on the use of TANALISED® E pressure treated timber, please contact the Arch Timber Protection Advisory Service at the address below.

